



SYMONDS
& NEWEY







The Gables, Stockton

18 Earles Cl Stockton Southam CV47 8JQ



The Gables, Stockton £400,000+

Property Details

 1300 Square feet	 2 Parking	 3 Bedrooms
 2 Bathrooms	 2 Toilets	 Available from Now

Description

The showhome has now launched at this exclusive property in the heart of Stockton village, just a short drive to Southam. Warwickshire. Featuring an electric 2 car turntable and a host of modern features this property is sure to appeal to a wide range of buyers.

The all electric central heating system is complimented with hidden roof solar panels on the rear elevation.

As you enter the spacious hall you are faced with a large storage cupboard and leading to the left is a large open plan lounge, dining and kitchen area.

The 3 spacious double bedrooms are easily accessible with a modern en suite and french doors to the master bedroom.

The large family bathroom is at the end of the hall and easily available from all bedrooms and the lounge. With a large shower and a feature bath and TV recessed into the wall this is a bathroom dreams are made of.

The property must be viewed internally to full appreciate the level of finish and accommodation on offer.







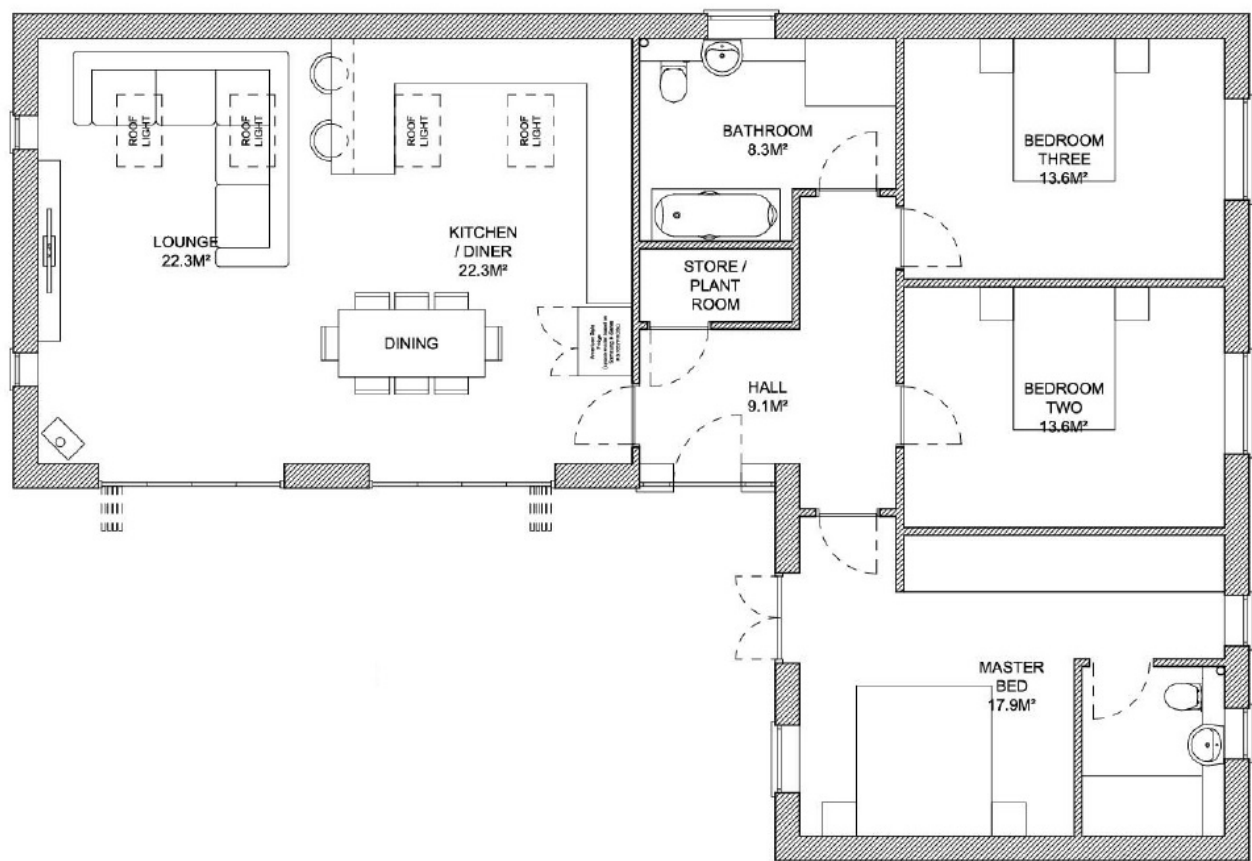








Flooplan



 info@symondsnewey.co.uk

 01926 754034