




SYMONDS
& NEWEY

Plot 5





Plot 5
£SSTC


Property Details


 1270 Square feet


 1 Garage

 2 Parking

 4 Bedrooms

 2 Bathrooms

 2 Toilets

 Available from Dec 2022

Description

Ashby Leas is a select development of 9 family homes surrounded by countryside at the entrance of Ullesthorpe village. This popular village in south Leicestershire boasts a primary school as well as a village shop, butchers, hairdresser, a pub, a hotel and golf course, doctor's surgery, village hall, playing field and chapel.

The development is on Ashby Road adjacent to the cricket field and playground. With just 9 homes designed with a contemporary twist we expect this development to be very popular with local home owners as well as families looking to settle in this popular village.

Each plot has been given a spacious garden and the houses have been designed to be easily extended in the future as needs may arise. The kitchen will be finished with a fresh shaker style door and easy to clean worktops. Neff double ovens come as standard as do gas hobs and quartz sinks.

Secure your property off plan and you will have the opportunity to adjust the kitchen finishes and choose wall tiles for the bathrooms. We use Porcelanosa wall tiles which we have found to be of the highest quality.

Each property benefits from 2 parking spaces as well as the garage and will come with a 10 year NHBC structural warranty.

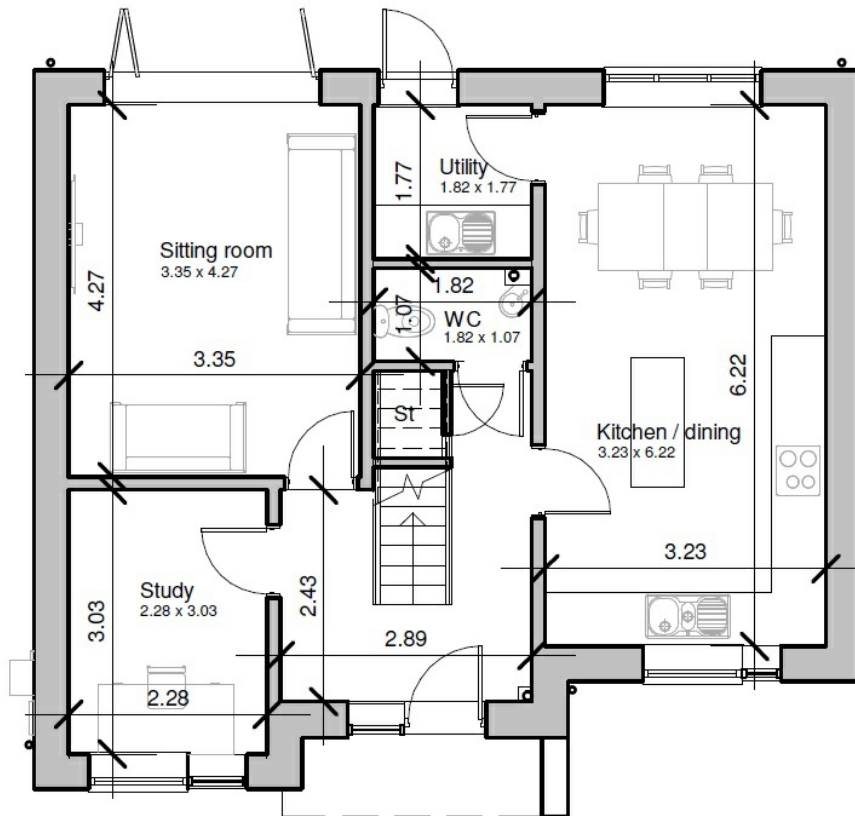


Oak handrails with
glass balustrade



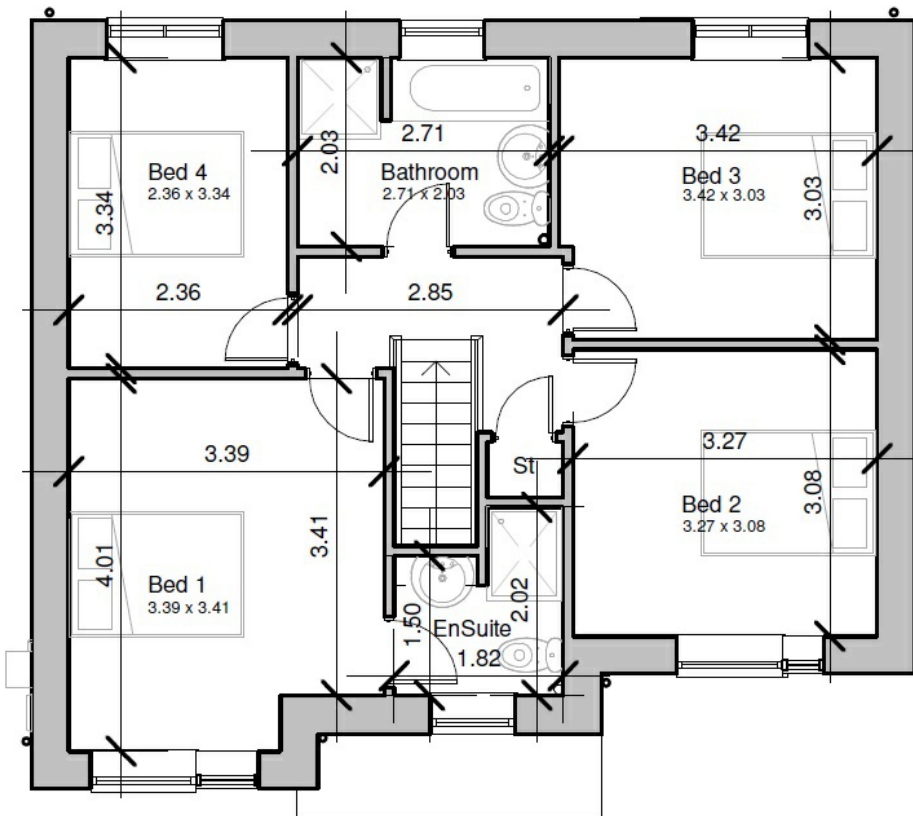
Floorplans

Ground Floor Plan



Ground floor

First Floor Plan



First floor

 info@symondsnewey.co.uk

 01926 754034